

MVP-2100

CF Card Solid-state Digital Signage Media Player



Highlights

- ◆ **Industrial-grade DVD Player Replacement**
- ◆ **Powerful schedule management features with included PC software**
- ◆ **Dedicated Non-PC Technology**
- ◆ **Plug-and-Play Ease of Use**

Suitable for

- ◆ **Retail Merchandising**
- ◆ **Restaurant Promotion**
- ◆ **Hospitality**
- ◆ **Point-of-sale Promotion**

The AIS MVP-2100 Digital Signage Media Player is an industrial-grade yet easy-to-use digital signage playback system.

Industrial-grade DVD Player Replacement

Many digital signage systems deployed in the field today are based on low-cost consumer DVD players unsuitable for commercial applications. Unlike the fragile mechanical playback mechanism employed by DVD players, the MVP-2100 is a 100% solid-state digital signage playback system utilizing long-MTBF storage technology and specifically designed for professional use.

Dedicated Non-PC Technology

The MVP-2100 features leading video decoding hardware technology capable of withstanding 24x7x365 operation cycle with almost no maintenance effort. Dedicated digital signage technology eliminates the risks of virus infection and operating system crash commonly found in PC-based solutions. Compared to a PC that typically consumes 100 watts, AIS's dedicated technology cuts power consumption by over 90%, lowering your operation cost while conserving the environment. Dedicated technology yields the lowest TCO (total cost of ownership) among the industry.

Plug-and-Play Ease of Use

The compact form factor allows the MVP-2100 to be installed in the smallest space available. Using the media player is as simple as loading media files to the specified folder on a CF card and plugging the memory card into the MVP-2100. No extra handling is needed. This plug-and-play ease of use allows the untrained field-person to conveniently and reliably update digital signs at each location.

The MVP-2100 is bundled with Signage Manager Express, a PC based scheduling and exporting tool offering fine-tuned weekly program scheduling, unmatched by any DVD player.

Technical Specification

POPAI Screen Media Standards Support

- S1 (JPEG 480p baseline)
- S4 (MPEG L2 audio)
- S5 (MP3 audio, 384Kbps)
- S6 (MPEG-1 SIF, 3Mbps CBR)
- S7 (MPEG-1 480p, 10Mbps CBR)
- S9 (MPEG-2 480p, 6Mbps CBR)
- E7 (MPEG-4 ASP, 480p, 10Mbps CBR)

Playback Control

- Alphabetical looping
- Playlist script control

Content Management

- Signage Manager Express via removable CF card

Physical Connectors

- VGA
- S-video, composite RCA
- 3.5mm audio jack

Local Storage

- CF card required, sold separately (a 4GB card holds approx. 3 hours of 480p video)

Accessories

- 3.5mm male-male audio cable

Power

- Input: 5V @ 2A DC
- Consumption: typical 4W

Environmental

- Operating temperature: 0 to 40°C
- Humidity: 5 to 85% @ 40°C, non-condensing

Dimensions (WxDxH)

- 5.3" x 4.4" x 1.0" (134mm x 114mm x 25mm)

Weight

- Approx 1.8 lbs (0.8 kg)

Safety

- UL-approved AC adapter

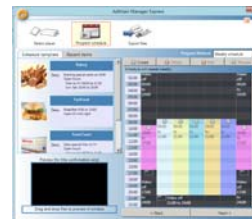
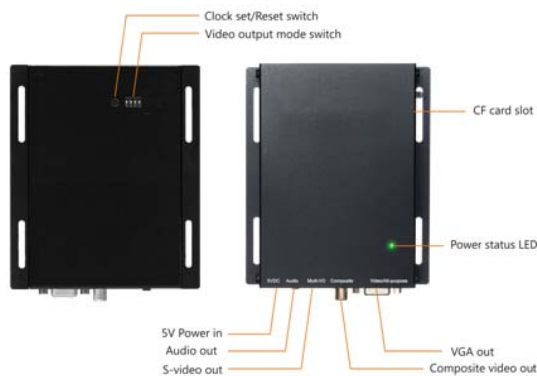
Certifications

- CE/FCC/RoHS

Warranty

- 1-year limited parts & labor

Product Photos



△ **Signage Manager Express for Playlist Scheduling**
Supporting Microsoft PowerPoint 2007 Slide Show

◁ **Player Connectivity**

Contact



American Industrial Systems, Inc.
1768 McGaw Ave.
Irvine, CA 92614
Tel: (888) 485-6688
Fax: (949) 251-8697
www.aispro.com