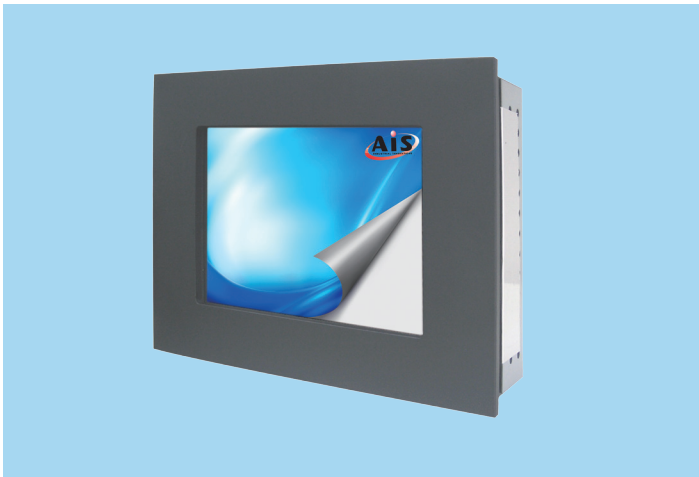


IP08T230-T1-4RT

8.4", 800 x 600 SVGA, IP65 NEMA 4 Monitor with Four-Wire Resistive Touchscreen and VGA Port



Features and Benefits

- All steel construction designed for harsh and industrial environments
- Robust design with aluminum NEMA 4/ IP65 front panel
- Meets NEMA 4/4x/12 and IP65 standards
- Accuracy in high-use applications
- Stable, drift-free operation
- Supports Windows Embedded and Linux operating systems
- Supports Panel, Wall, or VESA arm mounting

Introduction

The AIS 8.4" IP65 NEMA 4 monitor is fully-integrated, off-the-shelf unit (COTS) that combines five-wire resistive touch technology in an industrial-grade LCD panel, with a sleek and flat front surface industrial design; providing reliability, durability, and longer life. Impervious to environmental conditions i.e. liquid spills, splashes and wash-downs; these screens are the most contamination-resistant units in the market. These are designed for process control, food processing equipment, machine control, man-machine interface, automation, medical equipment, and in-vehicle applications.

Specifications

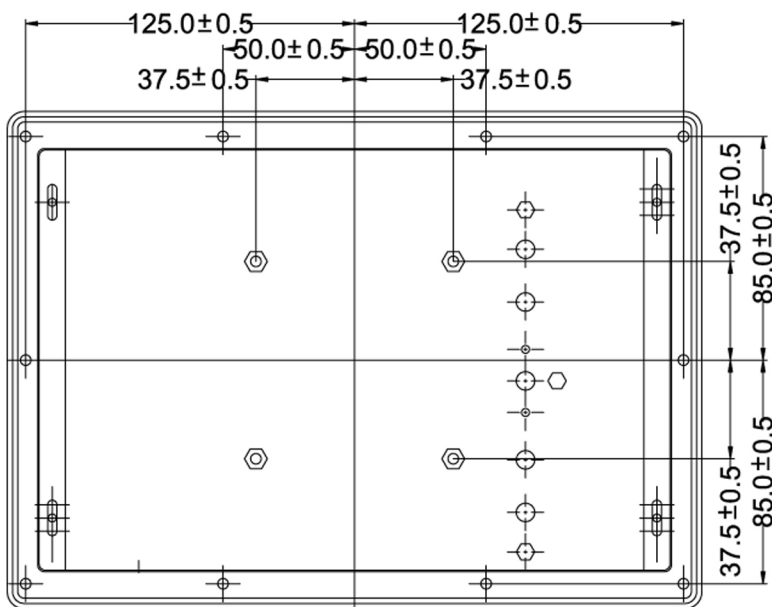
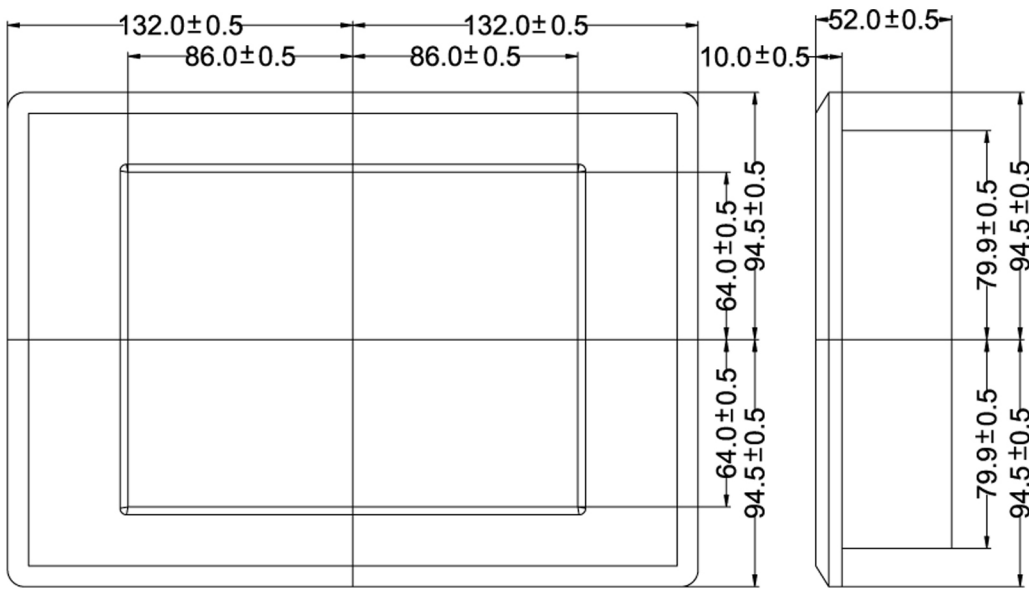
Display	
Display	8.4" diagonal, Active matrix TFT LCD
Aspect Ratio	4:3
Active/Area	170.4 (H) x 127.8 (V) mm
Native (Optimal) Resolution	800 x 600
General Supported Resolution	VGA 640 x 480 (60/66/70/72/75 Hz) SVGA 800 x 600 (60/70/72/75 Hz)
Colors	16.2M (8 bits + FRC)
Brightness (Typical)	LCD Panel: 450 nits Resistive Touch: 360 nits
Contrast Ratio	600:1
Viewing Angle	Horizontal: 150° Total Vertical: 150° Total
On-Screen Display (OSD)	Controls (back): menu, up, down, select, power Settings: contrast, brightness, H/V position, RGB (color temp), clock, phase, recall
Input Video Format	Analog VGA
Input Video Signal Connector	Mini D-Sub 15-Pin VGA Type, S-Video, Composite

Touch Technology	Resistive (USB (Type-B): Touch Interface)
General	
Power Consumption (Typical)	15W
MTBF	50,000 Hours Demonstrated
Mounting Options	75 x 75 mm VESA Mount
Dimensions (W x H x D)	238 x 185 mm
Environmental Conditions	
Temperature	Operating: 0°C to 40°C (32°F to 104°F) Storage: -20°C to 60°C (-4°F to 140°F)
Humidity (Non-condensing)	Operating: 20%-80% Storage: 10%-90%
Approvals	
Approvals	CE, FCC (DOC)

Order Information

IP08T230-T1-4RT: 8.4" IP65 NEMA 4 Monitor with Four-Wire Resistive Touchscreen, 800 x 600 SVGA, 600:1 contrast ratio and VGA Port

Unit: mm



CUT OUT DIMENSION
(238 X 185 mm)